

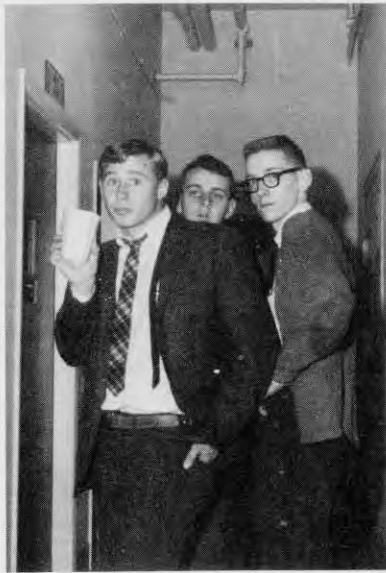
The Lion















Administration  
and Faculty



## Dedication



For expectation of our best personal conduct . . . For respect in our individual worth . . . For justice in handling our problems . . . For an example of unselfish devotion to duty, we proudly dedicate the 1966 LION to Mr. Albert C. D'Amato.



## President's Message

In an article in *READER'S DIGEST* about the National Cathedral in Washington, D.C., one of the workmen, carving a head on the capitol of a column in a high dark corner, working with infinite care, painstakingly on each minor detail, was asked why, since no one could see the carving anyway, no one would know if it was perfect or imperfect. He said, "I will know."

I think that workman's attitude toward his work illustrates the basic purpose of Cambridge School. If you know -- if your work makes a difference to you -- it will make a difference to everyone else, and your Cambridge School experience will be something you will never forget.





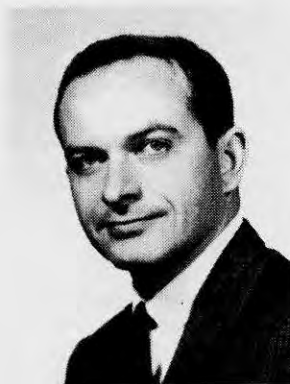
MR. MILTON GRAHM  
President



MR. JACK NESSON  
Vice President  
Director of Admissions



MR. EDWARD L.  
KERR, JR.  
Dean, School of Business



MR. ALBERT R.  
WILLIAMS, JR.  
Director of School of  
Broadcasting



MR. HARRY D.  
MCCREMSKY  
Director, School and  
Student Activities



MR. DAVID L. MICHAUD  
Dean, Cooperative  
Education



MISS MARION F. EMSLIE  
Admissions Counselor



MR. CHARLES W.  
REYNOLDS  
Admissions Counselor



MR. NEUMAN L. WOOD  
Admissions Counselor



MR. FRANCIS DUANE  
News Director



MR. JOHN L. BRUNO  
Director of Housing



MISS BARBARA ALTMAN  
Librarian



MR. STANLEY R. ALTEN  
Radio Production  
Control Room Techniques  
Music Appreciation



MR. RICHARD J. BARTA  
Accounting  
Marketing Management  
Personnel Management



MISS PRISCILLA C. FORTESQUE  
English  
Public Speaking  
Speech



MR. PAUL G. HUSSEY  
Accounting  
Mathematics



MR. LOUIS IACOVIELLO  
Television Production



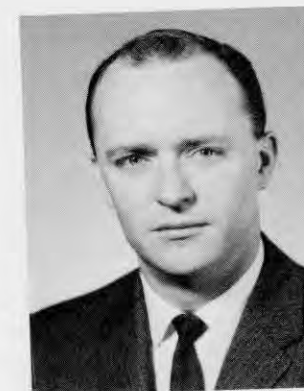
MRS. HILDRETH A. BOURN  
Office Practice  
Shorthand  
Typing



MRS. RITA CLOHERTY  
English



MRS. ROSE JACOBSON  
Shorthand  
Transcription



MR. NORMAN S. JESSOP  
Psychology-Sociology  
Department Chairman  
Psychology  
Sociology



MRS. RITA CUKER  
Office Practice  
Typing



MR. ALBERT C. D'AMATO  
English Department Chairman  
Business Communications  
Literature



MISS NANCY DOLPH  
Speech



MR. JOHN KENNEY  
Law  
Mathematics



MRS. GERALDINE A. KING  
Secretarial Science  
Department Chairman  
Shorthand  
Transcription



MISS ROBERT A. KLIGMAN  
Anatomy and Physiology  
Developmental Reading  
Psychology



MRS. GOLDIE KORENBERG  
Psychology



MISS MIRIAM F. LANDER  
English  
Literature



MISS DOLORES M. LAWLOR  
Shorthand  
Typing



MR. PAUL F. McNEESE  
Copywriting



MISS MARCIA M. MICHON  
Medical Office Procedures  
Office Practice  
Shorthand  
Typing



MR. HOWARD NELSON  
Announcing



MR. LEN LAWRENCE  
Announcing  
Newscasting  
Control Room Techniques



MR. EDWARD F. LYNCH  
Accounting  
Finance  
Marketing  
Sales



MR. DONALD OTTO  
World Broadcasting Systems  
Control Room Techniques



MR. GEORGE QUENZEL  
Television Production  
Introduction to Broadcasting



MRS. ARLENE E.  
MARGOLIS  
Psychology



MR. GEORGE MATSON  
Current Events  
Newscasting  
Programming  
Introduction to Broadcasting



MRS. MARY LOUISE  
McDERMOTT  
Accounting



MISS ANNE E. QUICK  
English



MR. JOHN STEPHANS  
Law  
Legal Office Procedures



MRS. ELIZABETH YATES  
Economics  
Mathematics



JANICE BERRY  
Secretary to the  
Director of Student  
Activities.



MONIQUE BOUCHER  
Secretary to the  
Director, School  
of Broadcasting.



MARY ANN CANTINO  
School Secretary



LINDA COSBY  
Secretary to Dean  
of Cooperative Education.



MRS. HAZEL KELLEY  
House Director  
Kenmore Hall



ELSIE COUSINS  
Night Secretary



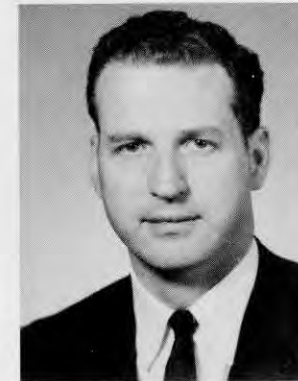
ANN MARIE DEL GIZZI  
Secretary in the  
Admissions Office.



MARY MCGONNIGLE  
Admissions Secretary



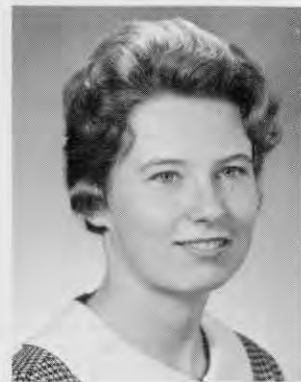
PHYLLIS NEWMAN  
Secretary to the  
President.



JOHN L. BRUNO  
Director of Housing.



L-R  
HAZEL KELLEY, OPEL HOOPER,  
ANNE LYNN, House Directors;  
ELEANOR ADAMOWICZ, School  
Nurse.



MARJORIE PRESPEP  
Secretary in the  
Main Office.



CAREN RITCHIE  
Secretary to the  
Dean, School  
of Business.



JUDY SARGENT  
Secretary to the  
Dean, School  
of Business.



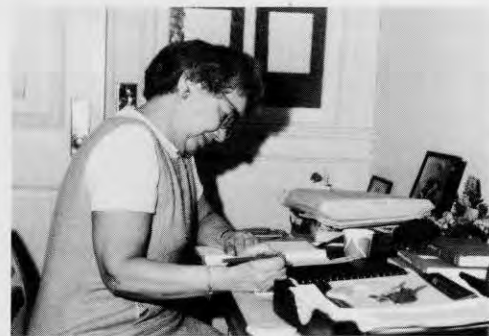
JOHN BOYD  
Superintendent



FRANK MAZZOTTI  
School Custodian

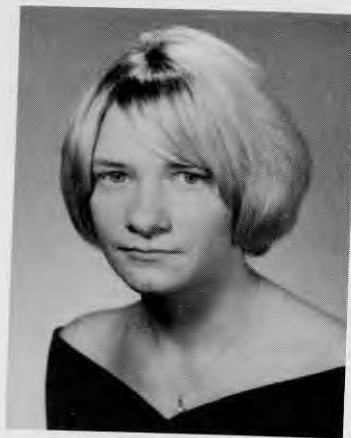


BILL THOMAS  
School Custodian



Seniors





Executive Secretarial

LORETTA M. ABERT  
Randolph, Mass.



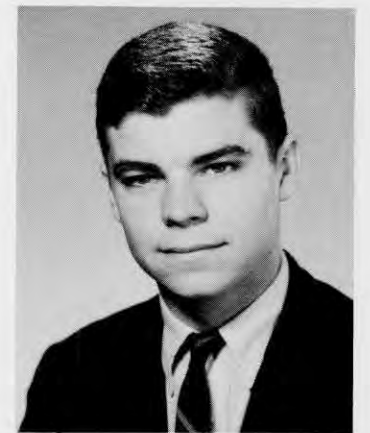
Business Administration

ARTHUR ABRAMS  
Brookline, Mass.



Executive Secretarial  
Bowling League; Inter-  
national Club; Treas.  
Epsilon Tau Sigma.

ROSA E. AYBAR  
Santo Domingo,  
Dominican Republic



Communications  
WCSB Staff announcer.

LYNDON P. BAGG  
South Hadley, Mass.



Business  
Administration

PHILIP A. ABRAMS  
Medford, Mass.



Executive  
Secretarial  
International Club;  
Bowling League;  
Epsilon Tau Sigma.

DIGNA ACOSTA  
San Juandelamag,  
Dominican Republic

Business Administration  
Captain, Basketball  
Team.



HERMAN L. BANKS  
Cambridge, Mass.



Communications  
WCSB Staff  
Announcer.

PETER D. BARKER  
Rochester,  
New Hampshire



Executive Secretarial  
International Club

CATHLEEN ALOISI  
Great Barrington, Mass.



Executive Secretarial

LAURYS M. ANDERSON  
East Longmeadow, Mass.



Business  
Administration

JOHN F. BARNES  
Waterbury, Vermont

Junior Accounting  
Epsilon Tau Sigma.



SHARON J. BARTON  
Middletown, Conn.



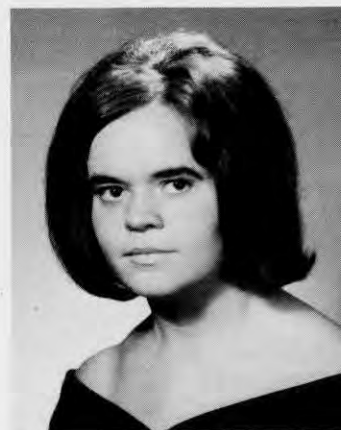
Communications

JOHN E. BEAULIEU  
Waterville, Maine



Medical Secretarial

LORETTE I. BERNARD  
Berlin, New Hampshire



Radio-TV Secretarial  
Epsilon Tau Sigma.

MARION F. BOISVERT  
Barrington, Rhode Island.



Medical Secretarial

SHARYN L. BOUDREAU  
Burlington, Mass.



Business  
Administration

GERALD L. BERREN  
Brookline, Mass.



Stenographic  
Glee Club

CANDACE M. BLACK  
Williamsburg, Mass.



Legal Secretarial

NICOLE H. BOUTHILLETTE  
Swanton, Vermont



Medical Secretarial  
Cheerleader

GLORIA H. BRAND  
Portsmouth, New Hampshire



Business  
Administration

FRANK BLECH'ARCZYK  
Chelmsford, Mass.



Communications  
Feature Editor.  
Cambridge Crier

ARNOLD S. BLOCK  
Lynn, Mass.



Business Administration

KEVIN A. BRENNAN  
Dorchester, Mass.



Business Administration

LORRAINE A. BROUSSEAU  
Southbridge, Mass.



Executive Secretarial

CONNIE E. BROWN  
Buckfield, Maine



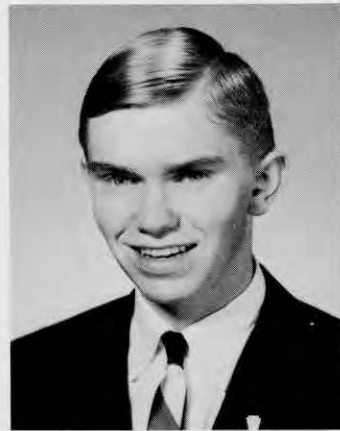
Business Administration

ROBERT J. BURNIEWICZ  
Dorchester, Mass.



Executive Secretarial

EMMA J. BURY  
Holbrook, Mass.



Business Administration

FORREST C. BROWN  
Bradford, Vermont



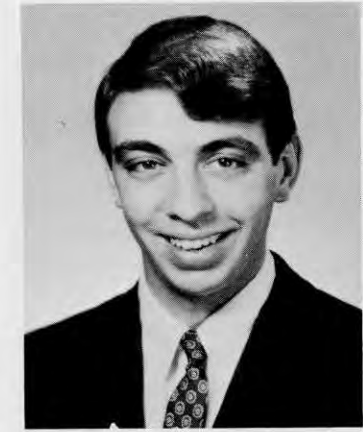
Business Administration  
Kappa Sigma Beta.

MICHAEL F. BROWN  
Brockton, Mass.



Stenographic

ELEANOR M. CARROLL  
Watertown, Mass.



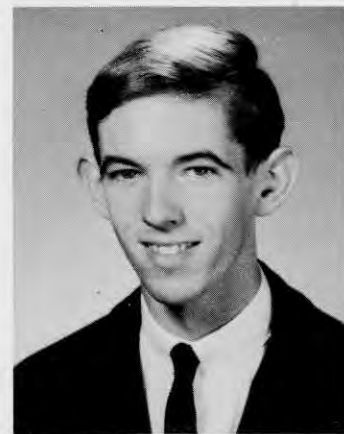
Business Administration  
Kappa Sigma Beta.

CHRISTOPHER A. CARROZZO  
Waterbury, Conn.



Business Administration  
Kappa Sigma Beta

DOUGLAS A. BRYSON  
Lexington, Mass.



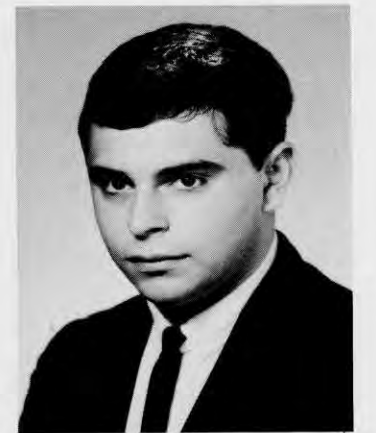
Communications  
WCSB, Sales Dept.  
Chi Sigma Beta  
Exclusive Society for  
Cambridge School  
Editors  
Vice Pres. Outing  
Club

STANLEY B. BURBANK  
Concord, New Hampshire



Executive Secretarial

ALANE M. CHARZENSKI  
Milford, Mass.



Communications

DENNIS J. CIPRIANI  
Mansfield, Mass.





Broadcasting

ROBERT A. CLENDENEN, JR.  
Bristol, Virginia



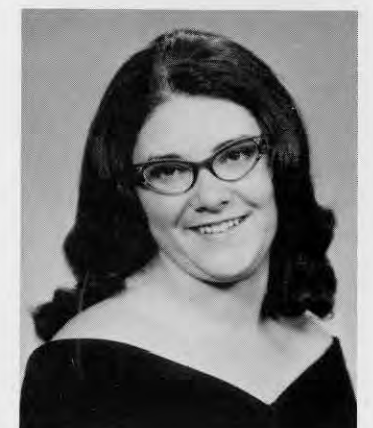
Stenographic

MEREDITH CLEVELAND  
South Casco, Maine



Stenographic  
School Band

ROBERTA L. CONWAY  
Vinalhaven, Maine



Executive Secretarial

NORMA E. COOK  
East Millinocket, Maine

Business  
Administration  
Associate Editor,  
Cambridge Crier;  
Managing Editor,  
Expression 1;  
Fund Raising  
Committee;  
Manager,  
Basketball team.



ALLEN S. COHEN  
Waterbury, Conn.



Executive Secretarial

ELLEN L. COHEN  
Canton, Mass.

Stenographic  
International Club.



LORNA M. DAILEY  
Goderich, Ontario, Canada



Executive  
Secretarial  
Outing Club  
Secretary,  
News Office.

MARY E. DAMIEN  
Windsor, Vermont



Executive Secretarial

Cheerleading Squad

ALICE A. COLEMAN  
Trenton, N.J.

Junior Accounting



LEONA M. COMEAU  
Cambridge, Mass.

Communications Glee Club



DONALD A. DeMEURERS  
Kirkland, New York

Medical Secretarial



KAREN L. DeVINE  
Foxboro, Mass.



Medical Secretarial  
Epsilon Tau Sigma,  
Secretary

FRANCES A. DiNOZZI  
Norwood, Mass.



Executive Secretaria.

DONNA J. DAVERSA  
Brockton, Mass.



Business Administration  
Cambridge Crier,  
Expression I, Honor  
Business  
Society, Finance Club.  
Exclusive Society of  
Cambridge School  
Editors.

MARK A. EBREO  
Waterbury, Conn.



Stenographic

BARBARA E. EINZIGER  
New Rochelle, New York



Business  
Administration

JOHN L. DRUGACH, JR.  
Hampton, New Jersey



Executive  
Secretarial

CHERYL ANN DRYDEN  
Allendale, New Jersey



Executive  
Secretarial

LINDA L. ESTES  
Lynn, New Hampshire



Communications  
Sports Editor,  
Yearbook; Sports  
Editor, Crier; Ass.  
Sports Dir. WCSB;  
Sec. Kappa Sigma  
Beta; CHI-SIGMA-  
BETA, Honorary  
Broadcasting  
Fraternity.  
Exclusive Society  
of Cambridge  
School Editors.

JOHN A. FIDLER  
Hamburg, Penn.



Business Administration  
Kappa Sigma Beta,  
President.

WILLIAM R. DUPRE  
Exeter, New Hampshire

Business Administration  
Kappa Sigma Beta.



JOHN W. ERKKILA  
Malden, Mass.



Medical Secretarial  
Epsilon Tau Sigma.

DOROTHY A. FISHER  
Brockton, Mass.

Business Administration  
Kappa Sigma Beta.



PAUL D. FLEMING  
Marblehead, Mass.



Executive Secretarial

NANCY L. FOGG  
Braintree, Mass.

Communications  
Continuity Director  
WCSB.



LESLIE D. FORBES  
Atlanta, Georgia



Business Administration

ALFRED W. GAUDET  
Lawrence, Mass.

Medical Secretary  
Epsilon Tau Sigma,  
President.



BETTE M. GAUL  
Pittsfield, Mass.



Clerical

JOANNE M. GALLINA  
Rochester, New York



Executive  
Secretarial

MARIE E. GIBBS  
Holliston, Mass.



Executive  
Secretarial

ANN MARIE P. GIOSEFFI  
Methuen, Mass.



Executive  
Secretarial

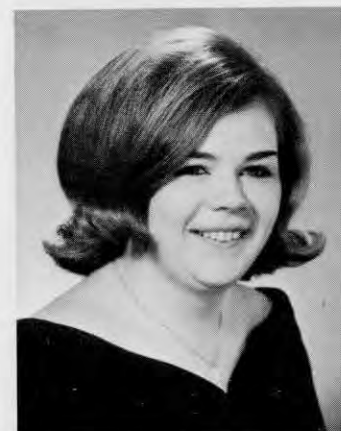
DIANE J. GALLOTTA  
Holbrook, Mass.

Communications  
Cheerleader



MARION E. GAMMONS  
East Falmouth, Mass.

Executive Secretarial



NANCY L. GLOVER  
Natick, Mass.

Clerical



RONDA GORDON  
Marblehead, Mass.



Medical Secretarial  
Epsilon Tau Sigma

ELAINE GRIGALUNAS  
South Boston, Mass.



Broadcasting  
WCSB Staff.

FREDERICK GREENING  
Newfoundland, Canada



Business Administration  
Epsilon Tau Sigma.

SANDRA M. HAYES  
Taunton, Mass.



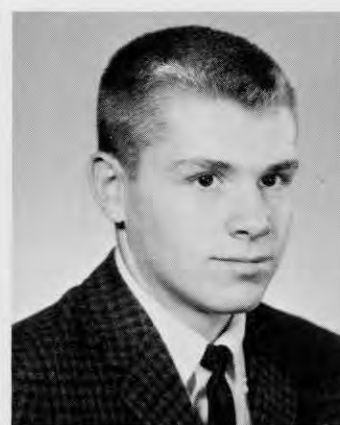
Business Administration

APRIL L. HEINTZELMAN  
Fishkill, New York



Medical  
Secretarial

LINDA GUTHRIE  
Ridgefield, Conn.



Broadcasting

BRUCE A. HALL  
Arlington, Mass.



Legal Secretarial

ROWEN A. HELLMAN  
East Hartford, Conn.



Radio-TV Secre-  
tarial, WCSB Staff;  
Typist, Cambridge  
Crier, Business  
Honor Society.

BETTY J. HEMMERLY  
Buzzards Bay, Mass.



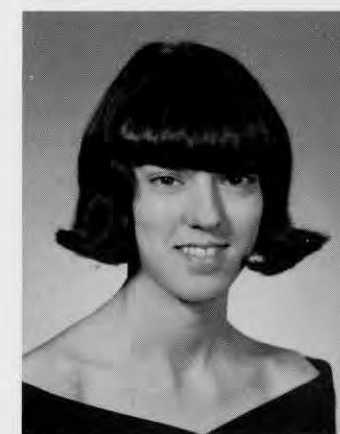
Business Administration

WARREN S. HAMMOND  
South Easton, Mass.



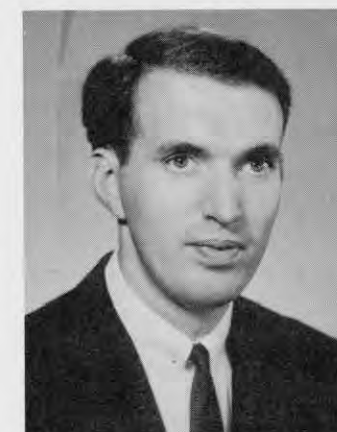
Communications  
WCSB TV

LEE F. HARRINGTON  
Brockton, Mass.



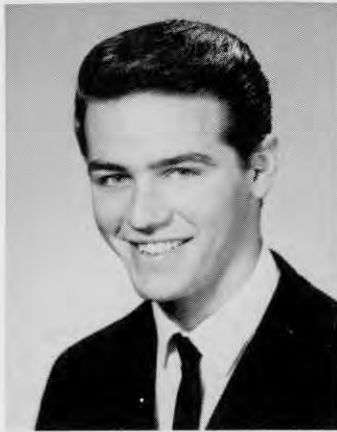
Executive Secretarial

JOAN L. HIGBY  
Howells, New York



Communications

G. LELAND HOLBROOK, JR.  
Natick, Mass.



Business Administration  
President, Student Council;  
Kappa-Sigma-Beta; Business  
Honor Society.

STEPHEN E. HUGGINS  
Norwood, Mass.



Medical Secretarial

LINDA L. HUTCHINS  
Dover, New Hampshire



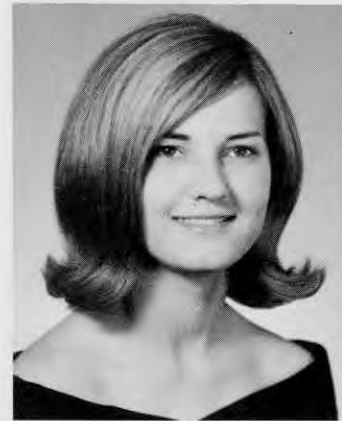
Executive Secretarial

JANET M. KING  
Watertown, Mass.



Executive Secretarial  
International Club.

COLETTE M. KNAPP  
Bennington, Vermont



Executive  
Secretarial

DONNA JABLONSKI  
Amsterdam, N.Y.



Communications

JOHN A. JESSEN, III  
Whitinsville, Mass.

Communications  
Editor,  
Yearbook; Editor,  
Cambridge Crier;  
Hometown Editor,  
Cambridge School;  
President, Exclusive  
Society of  
Cambridge School  
Editors; Student  
Council; Chi-Sigma  
Beta, Honorary  
Broadcasting  
Society; School  
Photographer; Fund  
Raising Committee,  
Chairman; 1965  
Graduation Usher.



GEORGE C. KOOYOOMJIAN  
Dorchester, Mass.



Stenographic

FLORENCE KOZIOL  
Amsterdam, N.Y.



Legal Secretarial

SUSAN KARAGEORGE  
Haverille, Mass.



Clerical,  
School Band

MARY L. KENISTON



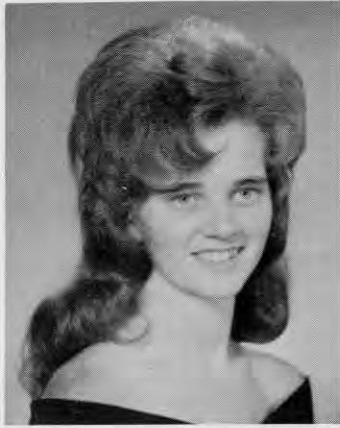
Broadcasting

ROBERT LALLY  
Brockton, Mass.



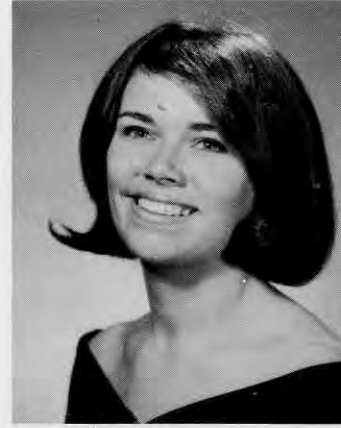
Communications  
Chief Engineer,  
WCSB

JAMES A. LANDRY  
Whitinsville, Mass.



Executive Secretarial

KATHLEEN M. LEE  
Billerica, Mass.



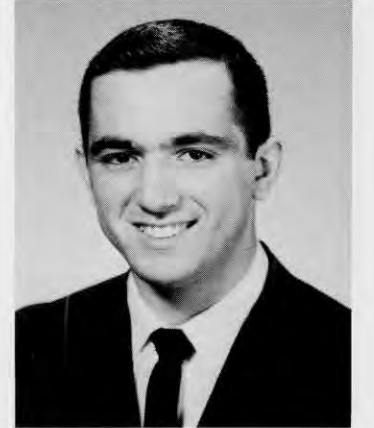
Legal Secretarial

ELSIE R. LEMASURIER  
North Chelmsford, Mass.



Communications  
WCSB News Director.

WALTER N. LUNT  
South Windham, Maine



Business Administration  
Kappa Sigma Beta,  
Treasurer.

JOSEPH LUPO, JR.  
Stoneham, Mass.



Business  
Administration

DOROTHY LEVESQUE  
Van Buren, Maine



Broadcasting  
Kappa Sigma  
Beta.

PAUL H. LEPAIN  
Southbridge, Mass.



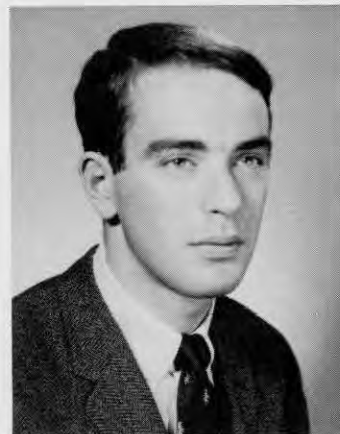
Medical  
Secretarial

DIANE V. MAGUIRE  
New Britain, Connecticut



Executive  
Secretarial

LUCY A. MARINI  
Newton, Mass.



Business Administration

RICHARD S. LEVINE  
Hartford, Connecticut



Communications  
WCSB News,  
promotions director;  
Cambridge Crier;  
Basketball team.

ROBERT R. LOWELL  
Gorham, Maine



Broadcasting

GLEND A. MARTIN  
Caribou, Maine



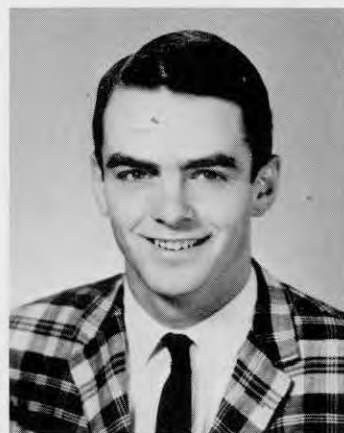
Executive Secretarial

BARBARA M. MASON  
Medford, Mass.



Executive Secretarial

CELIA ANN MASTROLEO  
Pheonix, New York



Communications  
Sports Director,  
WCSB.

VINCENT J. McALOON, JR.  
North Andover, Mass.



Medical Secretarial

PATRICIA A. McGRATH  
Newton, Mass.



Executive Secretarial

MARY LOUISE McNALLY  
East Bridgewater, Mass.



Communications  
Assistant Program  
Director, WCSB.

KENNETH A. McAUSLAND  
Walpole, Mass.



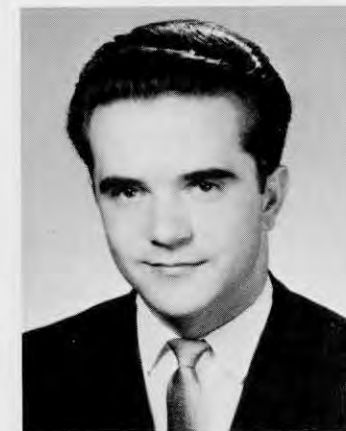
Communications

PATRICK K. McCAFFREY  
Cambridge, Mass.



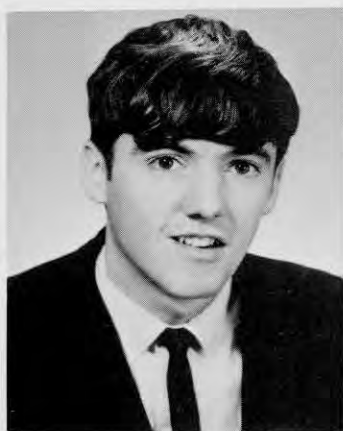
Executive  
Secretarial  
International Club;  
Epsilon Tau Sigma.

ANNABELLE MICHALSKI  
Ontario, Canada



Communications  
Staff Announcer, WCSB.

FRANCIS X. MESSINA  
Cambridge, Mass.



Business Administration  
Kappa Sigma Beta.

GEORGE K. McCARTHY  
Everett, Mass.



Business Administration  
Bowling League.

JAMES P. McCLOSKEY  
Somerville, Mass.



Clerical

GEORGE M. MINNIEFIELD  
Montclair, New Jersey



Legal Secretarial

THERESA M. MONIZ  
Norton, Mass.



Business Administration  
Kappa Sigma Beta.

DALE S. MORRISON  
Carlisle, Mass.



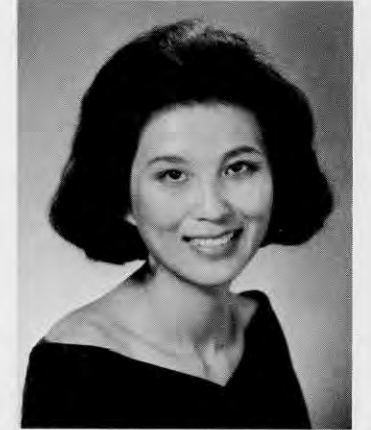
Clerical

LINDA JEAN NICHOLAS  
Bridgewater, Mass.



Executive Secretarial  
Glee Club

LILLIAN V. OWENS  
Roxbury, Mass.



Executive Secretarial

INCHUNG PARK  
Boston, Mass.



Business  
Administration

JAMES J. NOCERINO  
Hamden, Connecticut



Executive  
Secretarial  
School Band,  
Student Council.

CHERYL K. OBITZ  
Brockton, Mass.



Medical  
Secretarial

MARIA J. PATRIZI  
Wollaston, Mass.



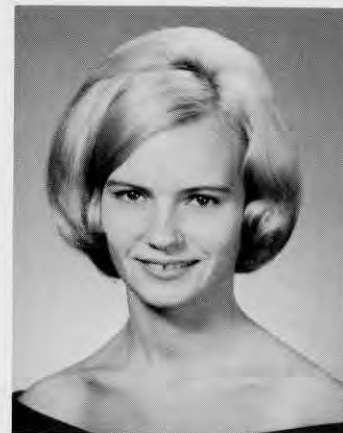
Clerical

DOROTHY G. PECK  
Plainville, Mass.



Medical Secretarial  
Epsilon Tau Sigma  
Pledge Trainer.

JANET L. OCHS  
Quincy, Mass.



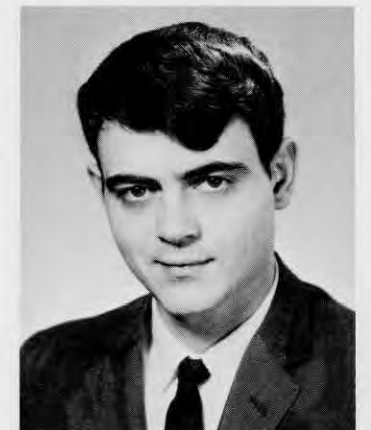
Legal Secretarial

DIANNE B. OULTON  
Swampscott, Mass.



Radio-TV Secretarial

MONA PHILBROOK  
Malden, Mass.



Business Administration

DONALD A. PHILLIPS  
Hydeville, Vermont





Executive Secretarial

JACQUELINE L. PHILLIPS  
Lynn, Mass.

Clerical,  
Epsilon Tau Sigma, Bowling.



JULIE E. PIKE  
Andover, Mass.



Broadcasting  
WCSB Staff Announcer.

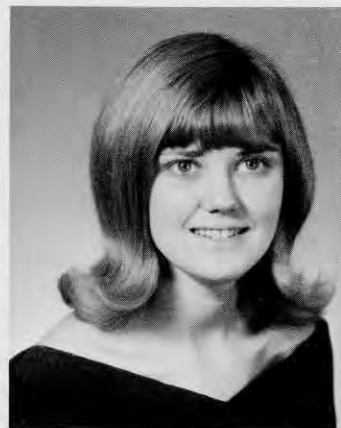
TERRY A. PURDY  
Syracuse, New York

Broadcasting



RICHARD B. PUTNAM  
Wilton, New Hampshire

Executive  
Secretarial



BARBARA J. POULIN  
Waterville, Maine



DALE J. POWERS  
Little Deer Island, Maine

Executive  
Secretarial



ROSEMARY QUINN  
Wakefield, Mass.



ATCHAREE RATANAKICH  
Bangkok, Thailand

Stenographic  
International  
Club.



Executive Secretarial  
Cheerleading I.

NORMA J. PUCCI  
Huntington Station, New York

Medical Secretarial  
Epsilon Tau Sigma.



SUSAN J. PULVER  
Providence, Rhode Island

Executive Secretarial



PARICHAT RATANAKICH  
Bangkok, Thailand

Executive Secretarial



MARCIA J. RAWLINGS  
Needham, Mass.



Communications  
Cambridge Crier.

ALPHONSE L. ROBERTO  
Peabody, Mass.



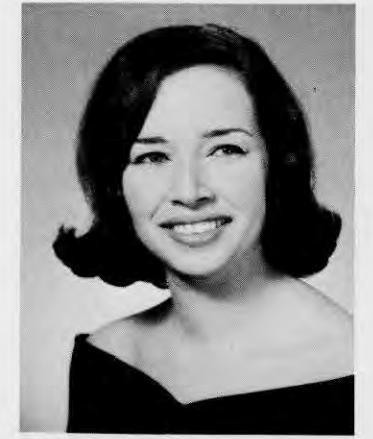
Executive Secretarial

MARY T. ROBERTS  
Dedham, Mass.



Business Administration  
International Club

ALEJANDRO RUIZ  
Costa Rica



Legal Secretarial  
Epsilon Tau Sigma,  
Chaplain.

BLANCA RUIZ  
Arecibo, Puerto Rico



Communications  
Cambridge Crier,  
WCSB-TV,  
Producer-Director

RICHARD J. ROGER  
Merrick, New York



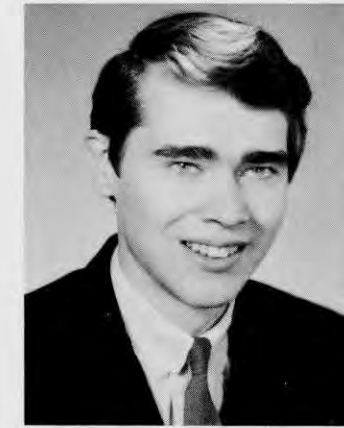
Clerical

JANET E. RODGERS  
Portland, Maine



Business  
Administration

STEPHEN C. RUSCOE  
Norwalk, Connecticut



Communications  
WCSB, Station  
Manager.

RICHARD L. SALONEN  
Walpole, Mass.



Stenographic

SUZANNE P. ROSCOE  
Margarita, Canal Zone



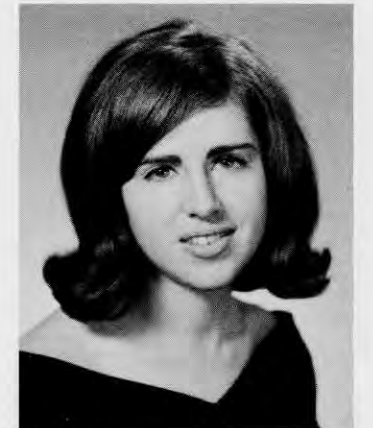
Medical Secretarial

ANGELA M. ROSITANO  
Gouverneur, New York



Communications

MICHAEL H. SALOVITCH  
West Peabody, Mass.



Medical Secretarial

MARGARET ANN SAMSON  
Pittsfield, Mass.



Legal Secretarial

KIM SANDERS  
Dover, New Jersey



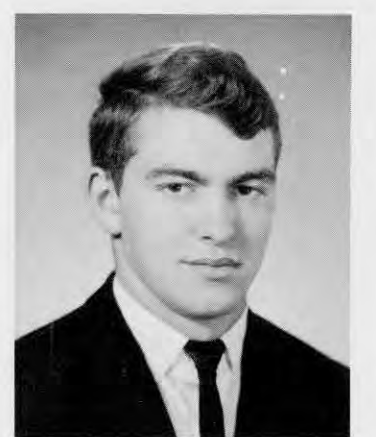
Business Administration  
Kappa Sigma Beta.

GORDON R. SAWYER  
Goshen, New York



Communications  
WCSB, Staff Announcer.

BARRY P. SMITH  
Medford, Mass.



Communications  
Student Council, Vice  
President; Kappa Sigma  
Beta, Vice President;  
Basketball; WCSB, Staff  
Announcer.

TIMOTHY W. SMITH  
Waterville, Maine



Broadcasting

SANDRA F. SELLERS  
Panama City, Florida



MIRIAM P. SHECTER  
Swampscott, Mass.



Executive  
Secretarial

VIVIAN A. SNELGROVE  
West Bridgewater, Mass.



Clerical  
School Band, Glee Club.

ANNE E. STEELE  
Kennebunkport, Maine



Communications  
Outing Club, President  
WCSB, Sales Director.  
Chi Sigma Beta.

BRUCE C. SHEPARD  
Montpelier, Vermont



Stenographic

SANDRA A. SHULMAN  
New Haven, Connecticut



Executive Secretarial

JACQUELINE STEEVES  
Natick, Mass.



Medical Secretarial

LOIS ANN STENABAUGH  
Wappingers Falls, New York



Broadcasting

RODGER A. STEWART  
Quincy, Mass.



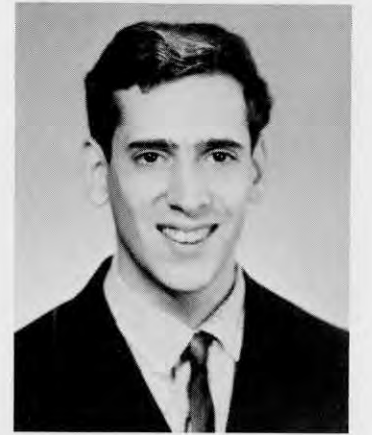
Broadcasting

ROBERT K. STONE  
Romeo, Michigan



Business Administration  
Kappa Sigma Beta

RONALD B. SURABIAN  
Medford, Mass.



Broadcasting

MARTIN L. SWARTZ  
Brookline, Mass.



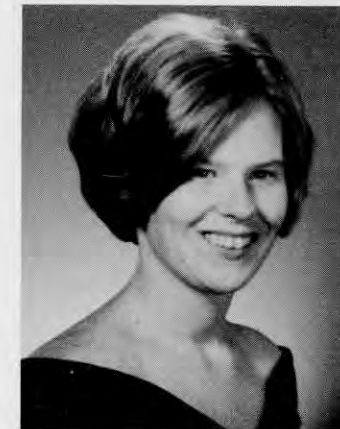
Executive  
Secretarial  
Glee Club

MARION L. STORY  
Mystic, Connecticut



Communications  
WCSB-TV,  
Producer-Director  
Kappa Sigma Beta.

VERNON S. STROMBERG  
Rumford, Rhode Island



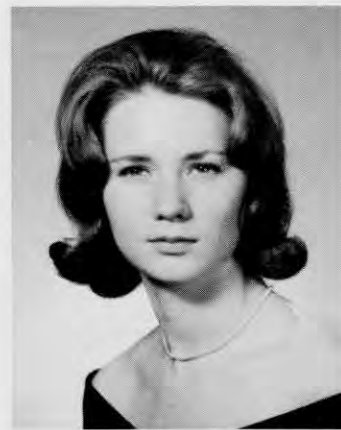
Legal  
Secretarial

FRANCES L. SWEENEY  
Andover, Mass.



Radio-TV  
Secretarial

NANCY S. SYLVESTER  
Belmont, Mass.



Legal Secretarial

DEBORAH L. STRONG  
Somerville, Mass.



Stenographic

CAROLYN M. STUART  
Natick, Mass.



Executive Secretarial

GERALDINE I. SZIKSAI  
Trenton, New Jersey



Communications  
WCSB Traffic Manager

CYNTHIA L. TINKER  
Claremont, New Hampshire



Communications  
WCSB, Program Director;  
Cambridge Crier.

WILLIAM B. TITCOMB  
Hingham, Mass.



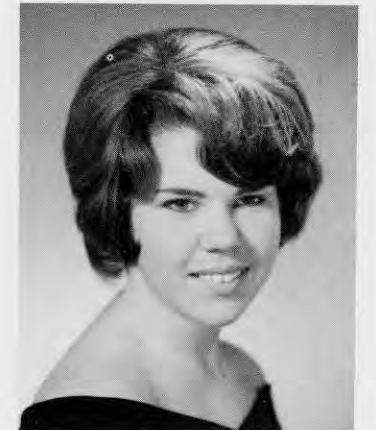
Broadcasting

DAVID G. THOMPSON  
Medford, Mass.



Business Administration

JAMES M. WALSH  
Norwell, Mass.



Executive Secretarial

LINDA L. WARREN  
St. Johnsbury, Vermont



Communications  
WCSB, Staff  
Announcer;  
Cambridge Crier.

ALLAN W. TOWNSEND  
Jamaica Plain, Mass.



Executive  
Secretarial  
Part-time  
Secretary,  
Cambridge School.

SUSAN C. TWITCHELL  
Gorham, New Hampshire



Communications  
WCSB-TV, Station  
Manager; Cambridge  
Crier; Expression I;  
Student Council.  
Chi Sigma Beta  
Exclusive Society  
of Cambridge  
School Editors.

PHYLLIS L. WEINER  
Dorchester, Mass.



Medical Secretarial

PHYLLIS M. WHEELER  
Ashland, Mass.

Executive Secretarial



BARBARA A. VANDERMARK  
Newburgh, New York

Business Administration



RICHARD M. TREADWELL  
Tewksbury, Mass.

Business Administration



GEORGE E. WADE  
Rochester, New Hampshire

Executive Secretarial



PAMELA R. WHITE  
Holbrook, Mass.

Communications  
WCSB Staff Announcer



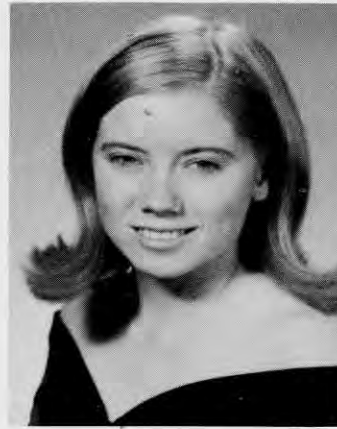
R. CRAIG WHITFORD  
Reading, Mass.



Stenographic

Medical Secretarial  
Epsilon Tau Sigma,  
Vice President; Cheer-  
leader, Co-Captain.

JOAN M. WHITNEY  
Somerville, Mass.



CAROL J. WILLIAMS  
Laconia, New Hampshire



Business Administration

BERNICE WYNN  
Victoria, Virginia



Clerical

Executive Secretarial  
Honorary Business Society;  
Student Council, Secretary.

VALERIE ZAMBRISKI  
Riverhead, New York



SOPHIE M. ZUB  
Bridgeport, Connecticut

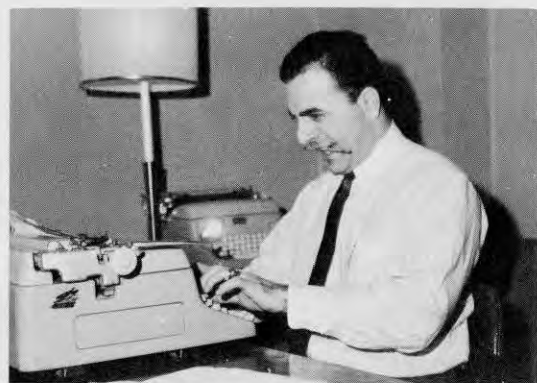
SENIORS NOT PICTURED

LORETTA M. ABERT  
BRUCE H. BALLE  
GERLAD W. BOTTIERI  
JOAN M. CASCOE  
FRANK DAVIS  
WILFRED S. DIAZ  
DIANA M. FEDUS  
JOHN E. FENTON  
ANA C. FRANKLIN  
DAVID M. KEANEY  
MARJORIE A. KING  
STEVEN P. LEVY  
DENNIS W. LINDSTROM  
LYNDA D. McCABE

STEVEN D. MORRIS  
DONALD G. MULLEN  
DAVID M. NEIGHER  
PATRICIA A. O'DONNELL  
DOUGGLAS F. OLSON  
HANS OSTRAND  
CYNTHIA C. PATTERSON  
LINDA C. PEARSON  
ROBERT G. PERHAM  
ROBERT G. PIERCE  
ALPHONSE L. ROBERTO  
ANTHONY J. PRATO  
ANN MARIE PRIMAVERA  
JAMES S. SARNO

LOUIS A. SERAFINE  
KENNETH R. SIMONS  
BARBARA L. SINGER  
CLAIRE A. SMORE  
JAMES G. STEWART  
LYNWOOD H. RICHARDS  
DAVID A. ROBB  
PETER F. ROMANO  
RODNEY E. ROSS, III  
EUGENE C. TETREAU, JR.  
MAURICE J. TOBIN  
RICHARD M. TREADWELL  
PETER TRIPALDI





## Juniors





ACCOUNTING 1

BOTTOM: W. Spates, P. Boyd, L. Davis, D. Hutton, D. Borozny, W. Burrige, R. Burke. SEC-  
OND ROW: D. DeLorme, R. Corignan, J. Diminico, R. Davies, L. Dunn, R. Moynahan, M.  
Garber, H. Eastland, R. Fink. THIRD ROW: J. Carroll, S. DePerri, C. Goddard, G. Goldstein,  
D. Baldwin, J. Hester, S. Goodman, P. Hammer.



ACCOUNTING 2

BOTTOM: A. Lawlor, J. Teixeira, P. Lloyd, J. Sullivan, C. Spallholz, R. Roy, H. Libowitz,  
MIDDLE ROW: W. Roberts, P. Tisdale, G. Sacco, F. Wilder, J. Mahoney, D. Walsh, J. Prior,  
P. Koss, TOP ROW: E. McCarthy, F. Martin, K. Shusterman, T. Perra, S. Rebman, A. Presutti,  
F. Paine.



EXECUTIVE SECRETARIAL 1

BOTTOM ROW: J. Wohlen, A. Merrill, N. Butler, F. Brown, M. Kazimer, L. Scarbo, C. Macau-  
ley, MIDDLE ROW: E. Stellato, J. Allen, S. Hansche, A. George, D. Miller, C. Martin, D.  
Souza, J. McAuliffe, C. Annese, M. McAuliffe, TOP ROW: D. MacLellan, V. Vogel, P. French,  
M. Mondich.



EXECUTIVE SECRETARIAL 2

BOTTOM ROW: C. Fermon, J. Hodge, C. Chin, O. Lane, N. Kaye, E. Cohen, A. Castellanos.  
MIDDLE ROW: C. Gonzalez, L. Allanach, E. Meckel, M. Hinkley, S. Lesperance, A. Lewis,  
E. Alvarez, A. Bennett, B. Guffey. TOP ROW: M. Anderson, J. Clarke, M. Browne, L. Dalry-  
mple, P. Brown.





EXECUTIVE SECRETARIAL 3

BOTTOM: F. Stewart, L. Terranova, K. Burns, I. Rubin, L. Shapiro, N. Yates, N. Steele.  
 MIDDLE ROW: K. Silverman, M. Doherty, D. Rosenberg, R. Peredo, G. Stravinski, P. Murphy,  
 J. Walker, K. Webber, M. Peredo, B. Rabain, G. Iluebbey, J. Wolff. TOP ROW: L. Cheney, D.  
 Limen, K. Petrosky, I. Minsky, P. Nash, H. Cicco, L. Obert.



LEGAL SECRETARIAL

BOTTOM ROW: B. Kowitz, T. Kish, C. Weiner, J. Landry, L. Alexander, C. Patturelli, E.  
 Parker. MIDDLE ROW: A. Martin, L. Turcott, A. Baldelli, C. Himmerlberger, V. Scruggs,  
 B. Schatzberg, J. Knowlton, S. Kerner, L. Acquaviva, J. Cisternelli, P. Jackson, C. Thomas.  
 TOP ROW: J. Nordman, V. Michon, M. Braverman, L. Schubauer, K. McMahon, J. Mitchell,  
 P. Enos, V. Bova, S. Swick.



MANAGEMENT 3

BOTTOM ROW: J. Lee, Y. Lord, M. Messina, L. Keller, E. Tilton. MIDDLE ROW: R. Mark,  
 B. Ketchen, M. Thompson, R. Tito, D. Burns, V. Golondzowski, L. Wakefield, W. O'Keefe,  
 W. Goodson. TOP ROW: E. Craig, T. Watson, A. Taylor, B. Jefferson, N. Levine.



MANAGEMENT 2

BOTTOM ROW: J. Provost, J. Nussdorf, J. Scolponeti, E. Sharrow, P. Martel, E. Nealley, J.  
 Neforos. MIDDLE ROW: D. Piver, M. Murray, G. Schuster, K. Prentice, S. White, K. Price,  
 L. Mathews, J. Tobin, J. Riley, P. Swift. TOP ROW: R. Pouser, J. Regan, R. Mulhern, E.  
 O'Conner, F. Marino, J. O'Neil, B. Sciola.



MARKETING  
 BOTTOM ROW: R. Coin, M. Sneider, E. Goldman, L. Pankewicz, B. Sanders, R. Schwartzman, S. Spaulding. MIDDLE ROW: M. Villanti, M. Levine, R. Crisco, T. Archer, R. Hall, R. Smith, D. Koffman, C. Grosby, M. Najorian. TOP ROW: S. Frappier, R. Ullman, R. Trombley, D. Putnam, G. Hark, I. Rome, E. Jacobson.



MEDICAL SECRETARIAL 2  
 BOTTOM ROW: G. Gibson, L. Labbe, L. Stetson, L. Saxon, L. McCabe, P. Pike, P. O'Donnel, P. Weiss, R. Bardo. MIDDLE ROW: J. Silverman, M. Wapner, N. Ribak, P. Kulacz, R. Archibald, E. Hirschberg, C. Fantaroni, C. Tunucci, D. Conrow, N. Dost, C. Truken, D. De Rose, A. Karlins, L. Jones, J. Arnold, C. Nestor. TOP ROW: M. Cohen, B. Stone, S. Ponte, R. Wenger, N. Shapiro, C. Morton, L. Du Be, L. Jackson, R. Dacys, J. Morrissey.



MEDICAL SECRETARIAL I  
 BOTTOM ROW: D. Duhamel, L. Hall, J. Katz, L. Bracci, N. Loving, A. Scott. MIDDLE ROW: J. Watson, J. Tavolieri, A. Hess, C. Chapman, B. Jones, R. Seaquist, B. Malinauskas. TOP ROW: M. Grubick, J. Fernandes, C. Brien, D. Magnusen, M. DeMelo.



RETAILING  
 BOTTOM ROW: B. Huebner, N. Schreibman, D. DeSanto, J. Meau, C. Tubbs, S. Lawler, S. Burke. MIDDLE ROW: S. Nedovich, S. Void, D. McArdle, C. O'Soro, B. Neville, R. Alimenti, A. Parise, B. Privitello, R. Czapnick. TOP ROW: P. Sinclair, D. Pelrine, H. Barker, W. Gray, R. McGovern, W. Hamilton.



BROADCASTING

BOTTOM ROW: B. Doherty, P. Downey, J. Ali, M. Gediman, F. Cavanar, R. Bryan. MIDDLE ROW: G. Dunn, G. Hudon, B. Cranney, G. Beebe, B. Devick, V. Bradley, R. Fraser, K. Honseknight. TOP ROW: B. Greenstein, G. Dennis, D. Cox, O. Felix, M. Burns, B. Kahle, D. Jarrett, B. Hollis, C. Barth, R. Barkhouse.



BROADCASTING

BOTTOM ROW: B. Whittemore, E. Cianci, R. Wheaton, Jr., M. Powers, F. Miller, J. Rick, T. Ostrander. MIDDLE ROW: T. Norcross, R. Carita, P. Dolan, J. Ledger, J. Puskenalis, F. Carta, E. Diamond, R. Mailloux. TOP ROW: M. Martin, E. Lewis, F. DeLuca, T. Deechan.



BROADCASTING

BOTTOM ROW: M. Franks, R. Brender, S. Izzi, M. Edwards, I. Shay, G. Lampron, G. Rysinger. MIDDLE ROW: L. Ames, J. Snyder, S. Brewer, R. Caten, J. Calzetta, W. Burgher, R. Calkins, R. Barber. TOP ROW: R. Fitzsimmons, C. Kuehn, W. Ryder, J. Cooke, M. Cooney, D. Clive, R. Belniak.

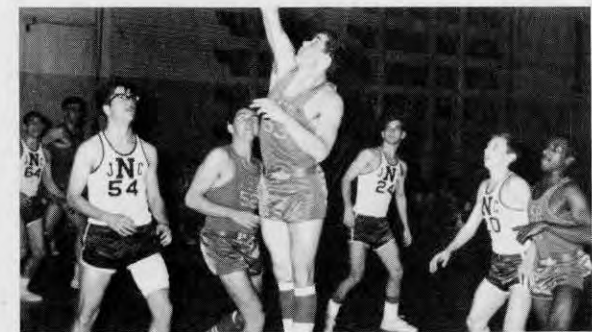


BROADCASTING

BOTTOM ROW: D. Kidder, P. Arthur, J. Dunclee, E. Mire, J. Ladenheim, W. Lesch. MIDDLE ROW: D. Shimkoski, L. Koteen, W. Beal, R. Francati, C. Smith, M. Tremblay, W. Zarzycki, J. Toomey. TOP ROW: T. Whitehead, B. Glovsky, C. Stone, A. Zalvis, W. Winchell, S. Zboya, D. Woodson, D. Scrivens.



D-32-2  
BOTTOM ROW: G. Levine, R. Levine, D. Mullen, R. Tankanow, J. Donovan. TOP ROW:  
S. Zboya, K. Thurston, P. Hollywood, R. Lally, G. Bellmare.



## Sports





FRONT ROW: Otto Felix, Herman Banks, Coach Harry McCrensky, Tim Smith, Pete Pagones. ROW TWO: John Neuman, John McCarthy, John Tondorf, Paul Malcolm, Alfred Gomes. ROW THREE: Alex Provos, Mickey Sneider, Mike Thompson.

Not a winning year, but a year of effort. That describes the Cambridge Lion basketball season to a tee. The hardships of injuries made a difference in a team that had an abundance of dim points, through the not so bright season.



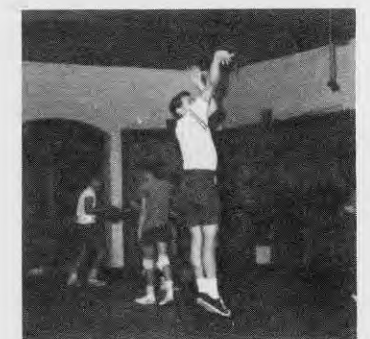
Captain Herman Banks, and Center Pete Pagones were voted to the Leagues first All-Star team. (Pete will be back next season). Tim Smith missed part of the year with injuries; he is a senior and will be missed under the boards next year. Senior -- Forward Bob Lowell played sparingly during the year, but his presence in the games he played was vital. Juniors, Otto Felix, Mike Henrique and Mike Thompson, who played regularly will be back again.



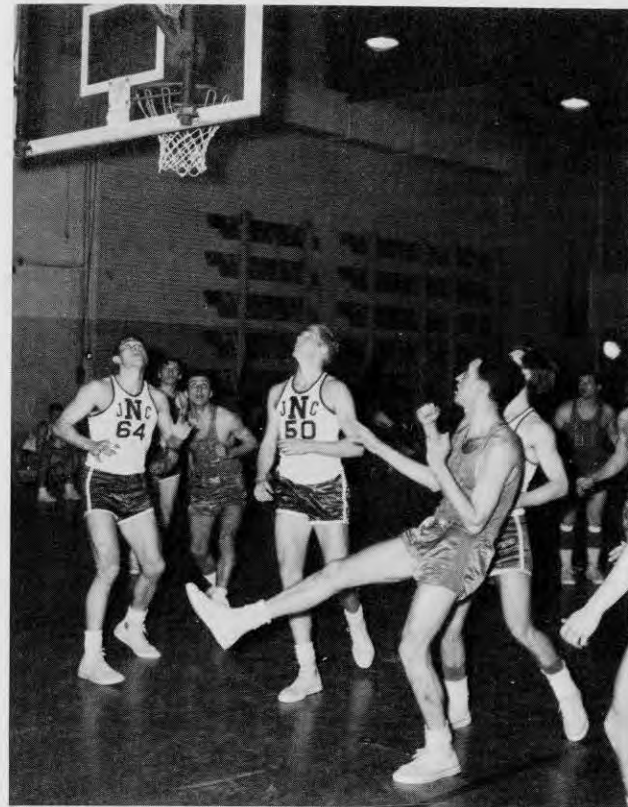
Ring around the rosey, a pocket full . . .



Tim, you've got a secret!



Three for a quarter!



One . . . Two . . . Three Kick.



Basketball and the harmonica . . .  
that's my life.



Catch me if you can!



Gee! Wish I could put a uniform on; I'd show 'em.



Two more for Otto.



Ouch! But I still scored.



FRONT ROW: Carol Williams, Meg Gammons, Gloria Brand. BACK ROW: Nancy Yates, Sandy Hayes, Lorraine Terranova, Linda Allanach, Diana Uliano, Sue Swick.

The Cambridge School Spirit held high once again during basketball season, as the Lion cheerleaders, pert and pretty, cheered the Lions of Cambridge in all of their efforts. Three cheers for the cheerleaders -- Hip Hip Hooray -- Hip Hip Hooray -- Hip Hip Hooray!!!



The Cambridge spirit!

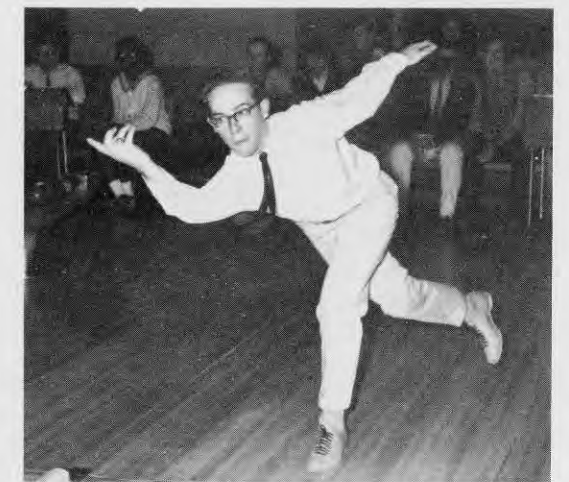


## 1965-66 Cambridge School Bowling Team

Mrs. Betty Yates supervised this years Bowling squad. The high keglers for the season were Bob Perham, high average, and Digna Acosta high averages in the ladies circuit.



One little, two little, three little strikes!



All beginners are on the other lane, Bob!



Well, I only cheated five pins!



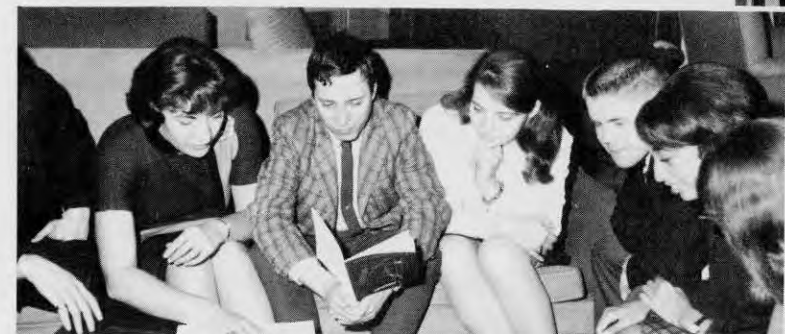
The Mens room? Right over there!



That's right. A strike and a spare equal 30.



## Clubs







### Student Council:

FIRST ROW: Stephen Huggins, President; Timothy Smith, Vice President; Sophie Zub, Secretary; Allen Cohen, Treasurer. SECOND ROW: Norman Jessop, Advisor; George Kooyoomjian, Raymond Wheaton, Cheryl Obitz, Phyllis Weiner, Karen Webber, Ruth Czapnik, Dean Edward Kerr, Advisor.



Here! I owe you \$5.00 for letting me become Vice President.

This is the best student council meeting we've ever had.



### Chi Sigma Beta Honor Society



FIRST ROW: Bruce Shepard, James McAloon, Phyllis Weiner, William Titcomb, John Fidler. SECOND ROW: Dean Albert R. Williams, Advisor; George Kooyoomjian, Craig Whitford, Stanley Burbank, Lyndon Bagg, James Landry, Arnold Block.

### National Business Honor Society



FIRST ROW: Linda Hutchins, Gloria Brand, Dorothy Levesque, Lorette Bernard, Lorraine Brousseau. SECOND ROW: Edward Lynch, Advisor; Anthony Prato, John Barnes, Cheryl Obitz, Betty Jean Hemmerly, Stephen Huggins, Maurice Tobin.



## Yearbook Staff

FIRST ROW: John Fidler, Sports Editor; George Kooyoomjian, Editor; Yolanda Lord; SECOND ROW: Anne Quick, Advisor; William Titcomb; Linda Keller, Janice McNall, Donna Duhamel.



## Yearbook Fund-Raising Committee

FIRST ROW: Janice Berry, Laurys Anderson, Pamela White; SECOND ROW: Mr. Harry McCrensky, Advisor; Anne Quick, Advisor; John Fidler; Celia Mastroleo; George Kooyoomjian, Chairman.



I still don't see how those pictures got into that yearbook.



John! That's not the way you spell dear mother.



See that George! she made another mistake.



Hi Miss Quick! . . . Hi John!

STAFF OF THE CRIER  
George Kooyoomjian '66 Managing Editor

Arnold Block '66 Feature Editor  
John Fidler '66 Sports Editor  
Al Cohen '66 Associate Editor  
Writers and Reporters  
Phyllis Weiner '66  
Hans Ostrand '66  
Mary Lou Edwards '67  
Tim Smith '66  
Stanley Burbank '66  
Allen Townsend '66  
Jerry Puskenalis '67  
Anne Merrill '67  
Bill Titcomb '66  
Mark Ebreo '66  
Production Workers  
B. J. Hemmerly '66 Typist  
Faculty Advisor Mrs. Arlene E. Margolis  
Technical Advisor Mr. Harry McCrensky  
Proofreader Miss Barbara Altman



Broadcasting Students Honored at Faneuil Hall—Students from Cambridge School of Broadcasting, Boston, received special key awards from Milton Graham (second from left), President of Cambridge School, at the school's Annual Convocation held at historic Faneuil Hall, Boston. Honor students shown receiving the special awards are (left to right) Fred Greening, Millertown, Newfoundland, Canada; Milton Graham; James Arnold, Sudbury; Stanley Burbank, Concord, New Hampshire; Phyllis Weiner, Dorchester, and John Fidler, Hamburg, Pennsylvania. Arnold graduated last June and returned for his award. Missing from above photograph is George Kooyoomjian, Dorchester, (your photographer).



President Graham congratulates honor students from the School of Business at Faneuil Hall. They are (left to right): Patricia McGrath, Newton; Milton Graham, President; James McCloskey, Somerville; Alfred Gaudet, Lawrence; Betty Jean Hemmerly, Buzzards Bay; Elayne Grigalunas, South Boston; Maurice Tabin, Dorchester; and Anthony Prato, Revere.

### CAMBRIDGE STUDENTS ON WBZ, COLLEGE RADIO WORKSHOP

By Phyllis Weiner, '66

Three broadcasting seniors recently appeared on WBZ's radio program, Contact, with Bob Kennedy. All schools participating in the WBZ college radio workshop offer courses in Communication Arts. Lee Harrington, Rick Roger, and Phyllis Weiner voiced their opinions in a lively discussion of "the Playboy Philosophy." The program was taped at the studios of WBZ and aired on Sunday, January 23 at 9:00 p.m.

A second program, produced and directed by Rick Roger, was aired on January 30. The subject of this documentary was drugs.



Appearing on WBZ radio are: L-R Lee Harrington, Bob Kennedy of WBZ, Phyllis Weiner and Rick Roger.

### HIGH-SPIRITED LIONS SET FOR 65 - 66 CAMPAIGN

By John Fidler, '66

The Cambridge Lions, with the words "fight, defense, and win" drummed into their heads, begin another basketball season, with the hopes of a winning campaign. The squad, with only two returning starters, Tim Smith and Herman Banks, hope to get the most out of the height that shows the only difference from last year's ball club; but a factor like this could be all this hustling team needs to go all the way in 65-66.

Coach Harry McCrensky optimistically said, "If they work on getting in shape, and on their defense, they could be the best team I've ever coached."



Cambridge Lions prepare for the season.

Added to the good outlook for this year's team is the morale boost that will come from the new cheering squad and spirited band. I hope the whole student body will come out and support the Cambridge Lions . . . be there to cheer your team to victory.

## Cambridge Crier Staff



SEATED: Mrs. Arlene Margolis, Advisor; John Fidler, Sports Editor; George Kooyoomjian, Managing Editor; Arnold Block, Feature Editor; BACK ROW: Mr. Harry McCrensky, Advisor; Leland Wagness; Hans Ostrand; Betty Jean Hemmerly; Mark Ebreo; Timothy Smith; Douglas Hadley; Mary Lou Edwards; Stanley Burbank; Phyllis Weiner; Lyndon Bagg; Ann Merrill; Richard Roger; William Titcomb.



Art Department, Crier Staff.



## Expression One

FIRST ROW: Beverly Mire, Nancy Sylvester, Mona Philbrook; SECOND ROW: Miss Miriam Lander, Advisor, John Erkkila, Gerald Goldstein, Mark Ebreo, Editor Allen Cohen.



Cheeze!

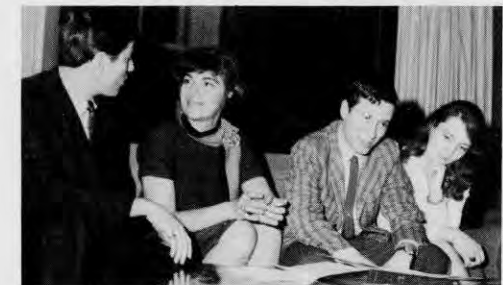


Did he snap the picture yet!

## Exclusive Society of Cambridge School Editors



FIRST ROW: Mrs. Arlene Margolis, Advisor; Betty Jean Hemmerly; Mary Lou Edwards; Phyllis Weiner; SECOND ROW: Mr. Harry McCrensky, Advisor; George Kooyoomjian, President; John Fidler; Mark Ebreo; Arnold Block.



# Cambridge Band

And now . . . well . . . if I could only find the page . . .



Fly trap anyone?



Cool it!!



Everybody dance!

# Finance Club



FIRST ROW: John Erkkila; Dorothy Levesque; Anthony Prato; SECOND ROW: Mr. Edward Lynch, Advisor; Mark Ebreo; Stephen Huggins; Maurice Tobin; Alejandro Ruiz; Allen Cohen.



Humph!!



You mean they haven't outlawed this??



## Epsilon Tau Sigma

FIRST ROW: Digna Acosta, Blanca Ruiz, Frani DiNozzi, Rosa Aybar, Carol Williams, Elayne Grigalunas; SECOND ROW: Mrs. Geraldine King, Advisor, Bette Gaul, Rosie Parent, Marion Boisvert; Sharon Bartash, Dorothy Fisher, Yolanda Lord, Sandra Hayes; THIRD ROW: Sharon Barton, Sandee Sellers, Rogene Seaquist, Joanne Patrizi, Janet Ochs, Annabelle Michaski.



This is a rush party???



This is a funny looking tea-bag.

Psst . . . There's a fly in my cup!



## Kappa Sigma Gamma



Here it is girls . . . our eviction notice.

Our class had 50% fewer cavities.



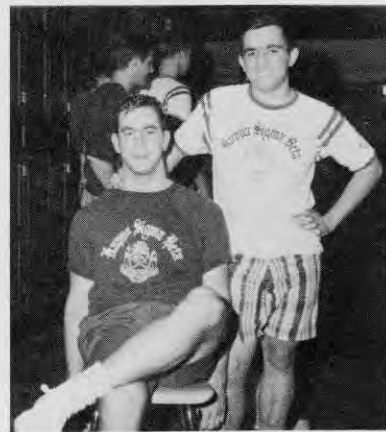
# Kappa Sigma Beta



FIRST ROW: Dennis Shimkoski; Anthony Watson; John Fidler, Secretary; Timothy Smith, Vice President; William Dupre, President; Joseph Lupo, Treasurer; Lyndon Bagg; Ronald Ullman; SECOND ROW: Thomas Gallagher; Donald Walsh; Frank Carta; Robert Perham; Paul Le Pain; Thomas Archer; Stephen Huggins; Frank Blecharczyk; Peter Tripaldi; Frank Marino; Michael Brown; Thomas Ackerley; Steven Levy; John Erkkila; THIRD ROW: Matthew Betton; John Rish; Raymond Wheaton; Eugene Lewis; Joseph Provost; James Ledger; Paul Fleming; William Cranney, Mark Ebreo; Christopher Carozzo; W. Hal Winchell; Edward Neally.



Excuse me people, just Passing through . . .



Yes Sir . . . People are funny.

# Outing Club



All beginners follow me . . .

Hey Joe, where are we?



Nice day if it doesn't rain.



I wish they would hurry up. I've got weak knees.



# WCSB Radio



FIRST ROW: Beverly Mire, James Landry, James McAloon, Cynthia Tinker, Lesley Forbes, Robert Lowell, Walter Lunt, Mr. Alten, Advisor. SECOND ROW: John Fidler, Ronald Carita, Terry Purdy, Bruce Shepard, Joel Cooke, Peter Barker, William Cranney, Richard Salonen, Kenneth McAusland, Richard Roger, Wayne Burgher, Frank Carta, Frederick Miller, Kenneth Simons, William Titcomb. THIRD ROW: Leland Wagness, William Derick, Stanley Burbank, Robert Stone, David Robb, Craig Whitford, Gerald Bottieri, Thomas Deechan, Dennis Shimkoski.



... Bradley or Shepard.

# WCSB Radio

... And it's all REWRITE!!!



All you do is put the stylus on the record.

Now ... is the selector switch?  
No, it's the activator switch.





# WCSB TV



FRONT ROW: James Landry, Richard Roger, William Titcomb, Phyllis Weiner, William Derick, James Stewart. SECOND ROW: Mr. Stan Alten, Advisor, Lesley Forbes, Cynthia Tinker, Walter Lunt, Stephen Zboya, Hal Winchell, Timothy Smith, Wayne Burgher, Lyndon Bagg, Richard Putnam, Dennis Shimkoski, James McAloon.



I either produce this show, or I'll take my camera's and go home!!!

# WCSB TV



We don't have to cry about it.



. . . Per Say



Super Clause . . . A-go-go



## International Club

FIRST ROW: Rosa Aybar, Digna Acosta, Rosana Peredo, Elena Alvarez; SECOND ROW: Alejandro Ruiz, Blanca Ruiz, Maria Cristina Peredo, Joanne Knowlton, Lyndon Bagg.



Okay girls, back in the trunk.



. . . from 30 states and 15 foreign countries.



Yes, I do look like President Graham, don't I? Would you believe LBJ?

## Wadsworth Club

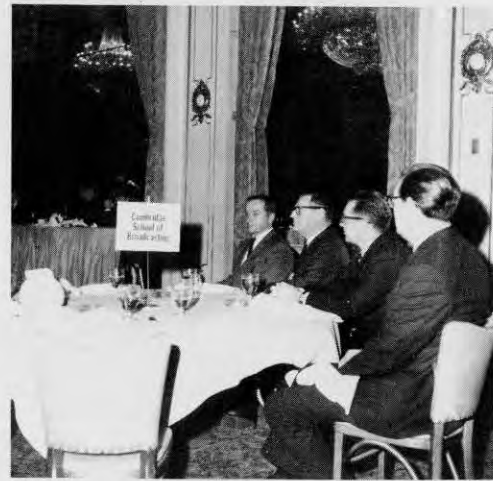


John Bruno, Advisor; William Derick, Vice President; Jeffrey Snyder, Treasurer; Stephen Ruscoe, President.

## Wadsworth Dorm Council



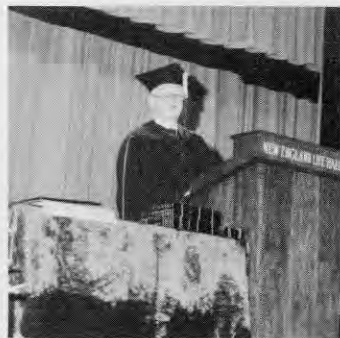
John Bruno, Advisor, Robert Whittemore, Robert Perham, Robert Stone.



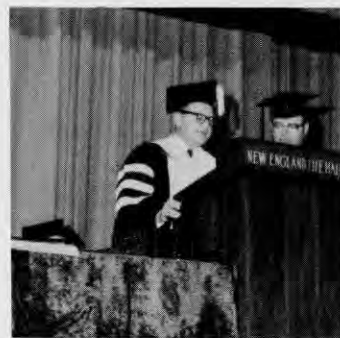
# Honors



President Graham addresses the student body and parents.



The Convocation address is given by Dr. Gerhart D. Wiebe, Dean of the School of Public Communication at Boston University.



President Graham presents a citation.



President Graham presents Richard A. Fulton, Executive Director and General Counsel, United Business School Association, with a Certificate of Merit.

## SCHOOL OF BUSINESS

### PRESIDENT'S HONOR LIST

John F. Barnes  
Lorette I. Bernard  
Gloria H. Brand  
Lorraine A. Brousseau  
Linda L. Hutchins

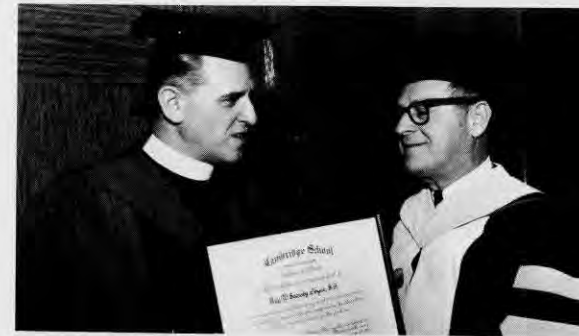
Dorothy A. Levesque  
Theresa M. Moniz  
Cheryl K. Obitz  
Janet L. Ochs  
Lois A. Stenabaugh

### DEANS LIST

Philip A. Abrams  
Linda A. Acquaviva  
Elena E. Alvarez  
Martha E. Anderson  
Rebecca J. Bardo  
Louis A. Baynes  
Karen A. Bratt  
Margie M. Bravermzn  
Charlene E. Brien  
Connie E. Brown  
Robert J. Burniewicz  
Kathleen L. Burns  
Nancy J. Butler  
Eleanor M. Carroll  
Catherine Chin  
Helen M. Cicco  
Meredith Cleveland

Bruce W. Coggan  
Norma E. Cook  
Lorna M. Dailey  
Linda R. Dalrymple  
Marie O. deMelo  
Wilfred S. Diaz  
Margaret F. Doherty  
Wilma J. Farinella  
Jeanne M. Fernandes  
Audrey M. George  
Ann Marie Gioseffi  
Eloise Goldman  
Bernadette P. Guffey  
Sharon L. Hansche  
Rowena Hellmann  
Betty J. Hemmerly  
John Henry

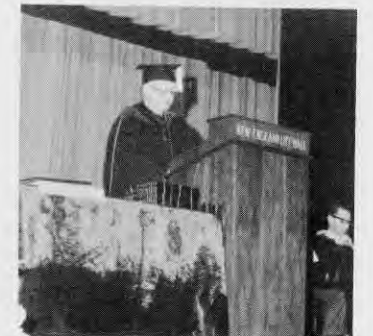
# Convocation



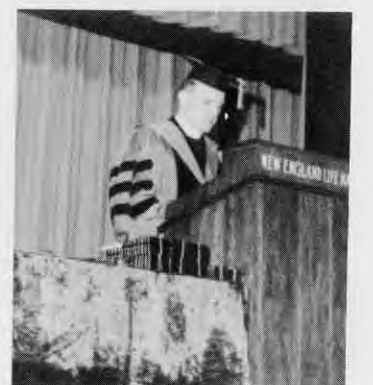
President Graham presents Reverend W. Seavey Joyce, with a Citation of Merit.



Mr. Fulton



Dr. Wiebe



Rev. Joyce

Francis J. Higgins  
Carol L. Himmelberger  
Jeannette M. Hodge  
Judith L. Katz  
Nancy J. Kaye  
Margaret E. Kazimer  
Marjorie A. King  
Terry A. Kish  
Joanne P. Knowlton  
Florence Koziol  
Patricia A. Lloyd  
Barbara J. Malinauskas  
Andrea L. Martin  
Janice M. McNall  
Joyce M. Mitchell  
Margaret R. Nash  
Jean I. Nordman  
James R. O'Neil  
Ellen S. Parker  
Maria C. Peredo

Roxana A. Peredo  
Sheila A. Ponte  
Kenneth W. Prentice  
Atcharee Ratanakich  
James Riley  
Mary T. Roberts  
Suzanne Roscoe  
Rosalie D. Scafi  
Rogene A. Seaquist  
Lynn E. Shapiro  
Dale M. Simen  
Frances J. Stewart  
Gloria M. Stravinsky  
Susan A. Swick  
Janet M. Tavolieri  
Claudia Thomas  
Maurice Tobin  
Diana L. Uliano  
Virginia Vogel  
Karen P. Webber

## SCHOOL OF BROADCASTING

### PRESIDENT'S HONOR LIST

John A. Fidler, Jr.

Phyllis L. Weiner

### DEANS LIST

Diane J. Biederbeck  
Stanley B. Burbank  
William E. Derick  
John J. Donovan  
Mary Lou E. Edwards  
Bruce A. Hall  
Lee F. Harrington  
William D. Hollis  
Keith W. Houseknecht  
David P. Jarrett  
Brian B. Kahle

David W. Kidder  
Gerald J. Lampron  
James A. Landry  
Francis X. Messina  
Frederick M. Miller  
Terry A. Purdy  
Richard B. Putnam  
Dennis H. Shimkoski  
Robert K. Stone  
David G. Thompson  
Stephen F. Zboya



Mr. Reynolds and the Band play for Convocation.



Convocation



Mr. Fulton and Rev. Joyce



Following the Convocation, a reception was held in the Charter Room of New England Life Hall, for the staff and faculty, guests, honor students and their parents.

## Graduation



June 3, 1966

. . . a time of mingled joy and sadness . . .

## Sponsors

The yearbook wishes to express its gratitude to the sponsors listed below whose generous contributions have helped make this edition possible.

## Parents

Dr. & Mrs. S. Martin Abrams  
 William & Nancy Ackerly  
 Mr. Charles A. Alber  
 Mr. & Mrs. Fred Ames  
 Mr. & Mrs. Philip T. Anderson  
 Mr. & Mrs. Vernon S. Bagg  
 Mr. & Mrs. Harold A. Baynes  
 Mr. & Mrs. Oscar L. Bjork  
 Dr. & Mrs. Maxwell C. Ballen  
 Mr. C. L. Bardo  
 Mr. & Mrs. Floyd V. Barker  
 Dr. & Mrs. John Russell Barker  
 Mr. & Mrs. Edwin H. Barkhouse  
 Mr. & Mrs. Converse L. Barnes  
 Mr. & Mrs. Leslie Barton, Jr.  
 Mrs. Grace P. Bates, R.N.  
 Mr. & Mrs. John C. Beal  
 Mrs. Eileen Beaulieu  
 Mr. & Mrs. William A. Bennett  
 Mr. & Mrs. William Berger  
 Anonymous  
 Mr. & Mrs. Alfred M. Block  
 Mr. & Mrs. Joseph Boisvert  
 Mr. & Mrs. A. Charles Brennan  
 Mrs. Juanita Patterson Brooks  
 Mr. & Mrs. Wilfred G. Brousseau  
 Mr. & Mrs. Melvin Brown  
 Mrs. Seretha Browne, R.N.  
 Mr. & Mrs. Stuart R. Bryan  
 Mrs. Frederick D. Bryson  
 Mr. & Mrs. Leon Bunton  
 Mr. & Mrs. Norman Burbank  
 Mr. & Mrs. Homer Burgher

Mr. & Mrs. Robert E. Burke  
 Mr. & Mrs. Lee D. Burns  
 Mr. & Mrs. Bramwell A. Bury  
 Mr. & Mrs. Charles R. Carita  
 Mr. & Mrs. James E. Carroll, Jr.  
 Dr. & Mrs. Christopher Carozzo  
 Mr. & Mrs. Agostino Cascone  
 Hector Castellanos, M.D.  
 Mr. & Mrs. George S. Chapman, Jr.  
 Mr. H. G. Cheney  
 Anonymous  
 Mr. & Mrs. Cesere Cipriani  
 Mr. & Mrs. Robert J. Cohen  
 Mr. & Mrs. Richard W. Coggon  
 Mr. & Mrs. Michael C. Coleman  
 Ernest & Ellen Conway  
 Mr. & Mrs. John A. Cooke  
 In Loving Memory of Mrs. C.  
 Ashton Cox  
 Mr. William Cross  
 Mr. & Mrs. Michael Czapnik  
 Mr. & Mrs. Frank Dalrymple  
 Mr. & Mrs. Arthur F. Damien  
 Mr. & Mrs. Therdore Daren  
 Donna A. Daversa  
 Bernie & Bessie Davis  
 The Rev. Dr. & Mrs. Paul de Meurer  
 Mr. & Mrs. John C. Dennis  
 Mr. & Mrs. Salvatore DePerri  
 Mr. & Mrs. Guido DiNozzi  
 Mr. & Mrs. James W. Doherty  
 Mr. & Mrs. Harold Donovan  
 Mr. & Mrs. Edward J. Drenzyk

Mr. John L. Drugach, Sr.  
 Mr. & Mrs. Eugene W. Dryden  
 Mr. E. L. Duhamel  
 Mr. & Mrs. Armand Dupre  
 Mr. & Mrs. Herbert Eastland  
 Mr. & Mrs. Owen Emery, Sr.  
 Mr. & Mrs. John H. Erkkila  
 Mr. & Mrs. Vincent Fantaroni  
 Mr. & Mrs. Santino Farinella  
 Mr. & Mrs. John A. Fidler  
 Mr. Gordon R. Forbes  
 Merrill & Marie Franks  
 Mr. & Mrs. Everett E. Frappier  
 Mr. & Mrs. Robert F. French  
 Mr. & Mrs. Albert Gallotta  
 Mr. & Mrs. Richard C. Gammons  
 Mr. & Mrs. Adrien Gaudet  
 Mr. & Mrs. Richard Gediman  
 Mr. & Mrs. Morris E. Glovsky  
 Mr. & Mrs. Leon Goldstein  
 Mr. & Mrs. Charles J. Gonzalez  
 Mr. & Mrs. Sumner M. Goodman  
 Mr. & Mrs. Charles Grasso  
 Mrs. Ruth S. Green  
 Mr. Malcolm Greening  
 Mr. & Mrs. Samuel Greenstein  
 Mr. & Mrs. V. Grigalunas  
 Mr. & Mrs. Samuel D. Grosby  
 Mr. & Mrs. Edward Hall  
 Mr. & Mrs. Simeon Hall  
 Mr. & Mrs. Clifford Hammer  
 Mr. & Mrs. Robert Hank  
 Mr. & Mrs. Ernest W. Hansche  
 Mrs. John J. Harrington  
 Mr. Frank Heintzelman  
 Mr. & Mrs. William Hemmerly  
 Mr. & Mrs. E. B. Henry  
 Mrs. Howard J. Hess, Sr.  
 Mr. & Mrs. Arthur Hester  
 Mr. & Mrs. Francis J. Higgins, Sr.  
 Mr. & Mrs. Robert R. Himmelberger  
 Anonymous  
 Mr. Howard A. Hollis  
 Anonymous  
 Mr. C. H. Huggins  
 Mr. & Mrs. John A. Hutchins

Mrs. Leon C. Hutton  
 Mr. Thurman J. Ireland  
 Mr. & Mrs. Walter Jablonski  
 Mr. & Mrs. Norton C. Jefferson  
 Mr. & Mrs. George Karageorge  
 Mr. & Mrs. Charles H. Keller  
 Mr. & Mrs. Lawrence L. Ketchen  
 Mr. & Mrs. Edward L. Knapp  
 Mr. & Mrs. Murray Koffman  
 Adele Ladenheim  
 Judge & Mrs. Edward J. Lampron  
 Mr. & Mrs. O. Edmond Laundry  
 Mrs. Jack Lane  
 Mr. Oliver James Lane  
 Mr. Frederick C. Lawler  
 Mr. Floyd H. Ledger  
 Mr. & Mrs. James Everett Lee  
 Mr. & Mrs. Thomas G. LeMasurier  
 Mr. & Mrs. Frank J. Lesperance  
 Mr. & Mrs. Arnold Levine  
 Mr. Joseph L. Levine  
 Mr. & Mrs. Newell Lewis  
 Mr. & Mrs. Herman Libowitz  
 Mr. & Mrs. William A. Lindstrom  
 Mr. & Mrs. Donald Lord  
 Mr. & Mrs. Robert R. Lowell  
 Mr. Walter E. Lunt  
 Mr. & Mrs. Leo E. Mailloux  
 Mr. & Mrs. George W. Malcom  
 Mr. & Mrs. William Malinauskas  
 The Frank Marino Family  
 Mrs. Joy C. Mark  
 Mr. Frederick C. Martin, Jr.  
 Mr. W. Fred Martin  
 Mr. & Mrs. Donald McArdle  
 Mr. & Mrs. Basil McAusland  
 Pauline McClain  
 Mrs. Marjorie McMahan  
 Mr. & Mrs. John Messina  
 Mr. & Mrs. George Minnefield  
 Mr. & Mrs. Jacob Mire  
 Mr. & Mrs. Melvin Mitchell  
 Mr. & Mrs. William Morrison  
 Mr. & Mrs. Robert J. Mulhern  
 Mr. & Mrs. James F. Murphy  
 Mr. & Mrs. Robert J. Murray

Philip R. & Verna S. Nedovich  
Mr. & Mrs. Max Neigher  
Mrs. Josphine Neville  
Mr. Harry A. Nocerino  
Anonymous  
B. M. Norcross, M. D.  
Mr. & Mrs. Dewar Norman  
Mr. & Mrs. Francis A. Obert  
Mr. David P. O'Keefe  
Anonymous  
Mr. Loring R. Oulton  
Mr. & Mrs. Anson W. Paine  
Wanda & Walter Pankewicz  
Robert L. & Rosemary S. Parent  
Mr. & Mrs. Andrew J. Parise  
Mr. Earl W. Peck  
Mr. & Mrs. John Petrosky  
Mr. William E. Phillips  
Mr. & Mrs. Walter N. Pike  
Mrs. Viola B. Popiolek  
Mr. & Mrs. Bernard Poulin  
Mr. & Mrs. John E. Powers  
Mr. & Mrs. Orbie B. Powers  
Mr. & Mrs. William Prentice, Jr.  
Mr. & Mrs. Michael Privitello  
Mr. Joseph W. Pulver  
Mr. Frank L. Purdy  
Mr. & Mrs. George M. Puskenalis  
Mrs. Louis Quinn  
Mr. & Mrs. Richard N. Rawlings  
Mr. & Mrs. A. J. Regan  
Mr. & Mrs. Larry Ribak  
Mr. & Mrs. Judson B. Robb  
Mr. Leonard Roger  
Mr. & Mrs. Ralph P. Romano  
Mr. & Mrs. Jerome Rosenberg  
Mr. C. E. Ryder  
Nina M. Rysinger  
Mr. & Mrs. George M. Sacco  
Mr. & Mrs. L. Salonen  
Mr. & Mrs. Howard Salovitch  
Mr. & Mrs. Walter E. Sanders, Sr.  
Mr. Gordon R. Sawyer '66  
Miss Gail A. Sawyer '63  
Mr. & Mrs. George R. Saxon  
Mr. & Mrs. Andrew D. Scarbo

Mrs. Henrietta Schatzberg  
Mr. & Mrs. Louis J. Scolponeti  
Mr. & Mrs. Roger A. Seaquist  
Mariette & Sam Shapiro  
Mr. Earl D. Sharrow, Jr.  
Mr. & Mrs. William Shecter  
Mr. & Mrs. Carl W. Shepard  
Mr. Henry W. Shimkoski  
Mr. & Mrs. Ned Shulman  
Mrs. Charles W. Smith  
Mr. & Mrs. Paul Y. Snyder  
Mr. & Mrs. Joseph H. Steele  
Mr. & Mrs. Donald D. D. Stenabaugh  
Mr. & Mrs. Robert J. Stewart  
Mr. & Mrs. Peter Stravinski  
Representative and Mrs. Vernon S. Stromberg, Sr.  
Mr. & Mrs. Milburn C. Stuart, Jr.  
Mrs. Frank J. Sweeney  
Mr. & Mrs. George J. Swift  
Mr. & Mrs. William L. Sziksai  
Mr. & Mrs. John P. Tinker  
Mrs. Helen B. Titcomb  
Mr. & Mrs. William Tito  
Mr. Frank G. Townsend, Jr.  
Mr. & Mrs. Richard Treadwell  
Mr. & Mrs. Peter Truken  
Mr. Lewis E. Ullmann  
Mrs. Anna F. Vandermark  
Mr. & Mrs. Anthony Vilar  
Mr. & Mrs. George E. Wade  
Mr. Donald E. Walsh  
Mr. & Mrs. Gordon D. Webber  
Mr. & Mrs. David L. Weiner & Family  
Mr. & Mrs. Michael Wenger  
Mr. & Mrs. Raymond Wheaton, Sr.  
Phyllis H. Wheeler  
Mr. & Mrs. James F. White, Jr.  
Mr. E. Russell Whitford  
Mr. Frederick H. Wilder, Jr.  
Mrs. Ruth Winchell  
Mr. & Mrs. Anthony Zalvis  
Mr. & Mrs. Jozef Zarzycki  
Mr. & Mrs. Joseph Zub

## Companies

We also want to express our appreciation to those who wished to remain anonymous and to those who contributions were received after our deadline.

Acoustical Products  
Algy Shoes, Incorporated  
Allied Advertising Agency, Incorporated  
Apahouser Corporation of New England  
Atlantic Press Corporation  
M. Brown & Company, Incorporated  
Brush Hill Transportation Company  
Burt Burden -- Tile Contractor  
Samuel Cabot, Incorporated  
Calzetta Farm  
Clark -- Franklin Press  
"Coffee Ann" Incorporated  
Community Antenna, Incorporated  
Conviser Construction Company, Incorporated  
Copley Camera & Hi Fi Center  
Cradock Apothecary  
Dooley Brothers, Incorporated  
E B B Leather Products Company  
Elge Plumbing & Heating Company, Incorporated  
Elizabeth Cleansers  
Errico Studio  
Frank's Florist  
Fredonia Hardware, Incorporated  
A. P. Gallina, Incorporated  
Dr. Manuel M. Glazier  
Gordon Linen Service  
Grappone, Incorporated  
Industrial Cafeterias, Incorporated

Hotel Kenmore  
Kenmore Optical Company, Incorporated  
Kenmore Pharmacy, Incorporated  
LePain's Professional Pharmacy  
Levy Hardware Company, Incorporated  
Lorell, Incorporated  
The Lynmark Company  
Massachusetts Indemnity and Life Insurance Company  
Metropolitan Petroleum Company  
Lawrence N. Miller -- Insurance  
New England Vending Corporation  
North America Fireworks Company  
Osborne Hall Associates, Incorporated  
Pierce Marine Service, Incorporated  
Public Employment Service Incorporated,  
37 Temple Place, Boston  
Putnam's Men and Boys Clothing  
Rotman Electrical Company, Incorporated  
John N. Schubauer, Demolition  
Scribi's Oil Service  
Sellers Inn  
Service Disposal Company, Incorporated  
Thurston Erlandsen Corporation  
Universal -- Watkins, Incorporated  
Utica Mutual Insurance Company  
Webb's  
Whitey's Home Bakery

## Other Interested Sponsors

### Faculty and Staff

Miss Barbara Altman  
Miss Janice F. Berry  
Mr. and Mrs. Frank P. Cantino  
Miss Nancy N. Dolph  
Mrs. Priscilla Fortescue  
Mr. and Mrs. Milton Graham  
Mr. and Mrs. Paul G. Hussey  
Mr. and Mrs. M. S. Jacobson  
Mr. and Mrs. Norman S. Jessop  
Miss Roberta Kligman  
Mrs. Goldie Korenberg  
Mr. and Mrs. Edward F. Lynch  
Mr. and Mrs. Robert A. Margolis and Gary  
Mr. and Mrs. Harry McCrensky  
Mrs. Marylouise P. McDermott  
Mr. and Mrs. Melvin J. McGonnigle, Jr.  
Miss Marcia M. Michon  
Mr. and Mrs. Jack Nesson  
Mr. Donald Lee Otto  
Miss Margorie Presper  
Charels W. Reynolds  
Mr. and Mrs. Neuman L. Wood  
Mrs. Elizabeth A. Yates

We wish to express our appreciation to the Faculty and Staff who made contributions and to those who wish to remain anonymous.



The Lion

